

The ideal candidate qualification:-
HNC/HND Electrical and Electronic engineering

Minimum entry level qualifications: -

- NVQ level 3
- BTEC ONC mechanical/electrical engineering,
- BTEC level 3 in mechanical & electrical/electronic engineering
- BTEC level 3 in mechatronics,
- City and Guilds Level 3 engineering

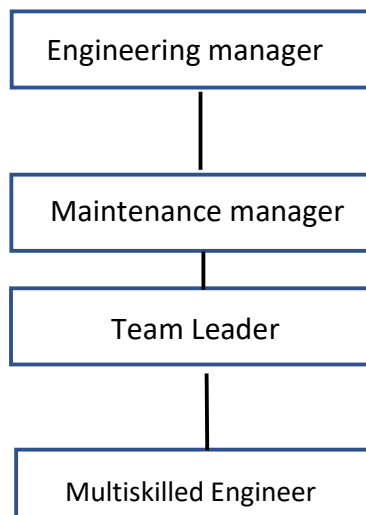
Additional skills advantageous but not essential: -

- a good understanding of HACCP principles
- Level 2 food safety in Manufacturing
- IEE qualification up to 18th edition wiring regulations
- IPAF access platforms 3A and 3B
- ROSPA or IOSH training
- Abrasive wheels safety course
- PUWER assessments
- Boas Training
- F gas and Ammonia

Soft skills:-

- A proven track record in an engineering and fault finding role gained from a FMCG environment (ideally the food industry)
- Excellent communication skills
- Assertive, with the ability to make decisions on the spot
- A can do attitude and a strong work ethic
- Take personal accountability for own development relevant to business needs.
- Role model behaviours and standards of work, including process confirmation.
- Cost and Budget awareness.
- Strong computer skills with experience of using a CMMS system.
- Strong demonstratable experience in CI and reliability techniques
- Strong understanding of permit to work systems and contractor controls.
- Proven track record in man management through absence, sickness and procedure control.

How the role sits:-



The role key activities:-

- A background in people management where you've delivered strong results through a team.
- Undertake Crisis Incident Management, Accident and Near Miss investigations and ensure standards of discipline are maintained, handling infringements in line with company discipline & grievance procedures
- Ensure that all Engineers, Apprentices, Asset care technicians and contracted labour within your areas of responsibility are given the appropriate information, instruction and supervision necessary to enable them to work safely and without injury to health to themselves or others.
- Ensure that all Engineers, Apprentices, Asset care technicians and contracted labour within your areas of responsibility are held accountable and responsible when they fail in their duty of care to provide a safe working environment.
- Ensure risk assessments, SSW's and training requirements are regularly reviewed and appropriate hazard controls are in place and managed at all times.
- Conduct regular documented 1 to 1 discussion with your team, ensuring constant alignment with personal objectives.
- Ensure delivery of the daily engineering activity plan as agreed with production
- Ensure that plant history is captured to high standards enabling improvement.
- Ensure that the daily review meeting structure is supported by taking proactive actions
- Ensure that high 5S standards/levels are maintained across the factory.
- Ensuring that both chronic and repeat downtime events are rigorously reviewed via a robust RCA process.
- Ensure that the site is ready for internal and external food safety audits.
- Ensure that the site is ready for legal engineering compliance audits.
- Ensure department KPIs and targets are delivered on time and in full by effectively using resources.
- Developing the technical skills and competence of team members.
- Strong management of holidays and absence to ensure adequate shift cover is always available to drive performance.